



TIIG

INJURY SURVEILLANCE IN THE NORTH WEST OF ENGLAND

Furness General Hospital Emergency Department

Monthly Bulletin: April 2012 to March 2013

This bulletin provides a breakdown of all injury attendances to Furness General Hospital Emergency Department (ED) between April 2012 and March 2013.

Between April 2012 and March 2013 there were 5,041 injury attendances to Furness General Hospital ED. The month with the highest attendance was May with 539 attendances, compared to 269 in January (**Figure 1**). There were more male than female attendees presenting at the ED (males=3,048; 60%).

Figure 2 illustrates the age group of ED attendances for each month. The majority of attendees were aged 15-29 years (n=1,657; 33%) and 30-59 (n=1,545; 31%). Sixteen per cent (n=818) were aged 5-14 years with the same proportion aged 60 years and over (n=783).

The referral source of injury attendances to Furness General Hospital ED are shown in **Table 1**. The majority of the ED attendances were self-referrals (n=4,639; 92%). Five per cent of attendances were referred by the emergency services (n=265).

Table 2 details the injury group of ED attendances. Over half (n=2,723; 54%) of injury attendances were recorded as other injury. Sports injury accounted for over one-fifth (n=1,114; 22%) of attendances and over one in ten (n=567; 11%) were road traffic collisions (RTC). Seven per cent (n=364) of all injury attendances were assaults and 5% (n=273) were deliberate self-harm (DSH).

The incident location for attendances to Furness General Hospital ED is displayed in **Table 3**. Over four in ten (n=2,108; 42%) incidents occurred in a public place followed by 31% (n=1,587) in the home.

Table 4 illustrates the discharge destination for all injury attendances between April 2012 and March 2013. Four in ten (n=1,993; 40%) attendees were discharged into the care of their GP. Twenty-one per cent (n=1,050) were discharged with no follow-up required, 14% (n=704) were referred to the fracture clinic and one in ten (n=493; 10%) were admitted to hospital.

Assault attendances

Between April 2012 and March 2013 there were 364 assault attendances to Furness General Hospital ED. July was the month with the highest attendance (n=45) and June had the lowest number of assault attendances (n=22) (**Figure 3**). There were significantly more male than female assault attendees presenting at the ED (males=290; 80%).

Table 5 details the age group of assault attendances for each month. Over half (n=204; 56%) of all attendees were aged 15-29 years and 35% were aged 30-59 years (n=128).

Table 6 shows the incident location for assault attendances to Furness General Hospital ED. The primary incident location was in a public place (n=212; 58%), followed by almost one-fifth (n=65; 18%) occurring in the home.

The discharge destination for assault attendees are illustrated in **Table 7**. Forty-four per cent (n=161) required follow-up treatment and just less than four in ten (n=142; 39%) were discharged. Seven per cent of assault attendees were admitted to hospital (n=25).

Figure 1: ED injury attendances by gender and month, April 2012 to March 2013

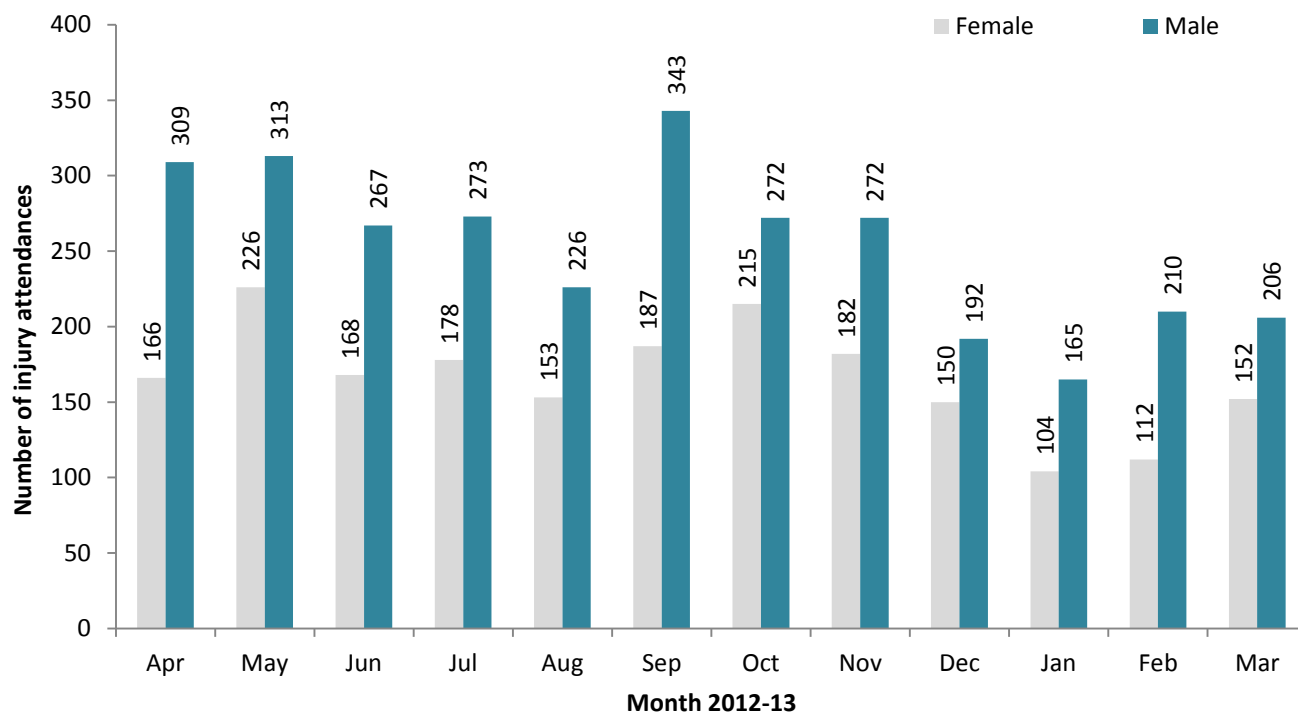


Figure 2: Age group of ED injury attendances by month, April 2012 to March 2013

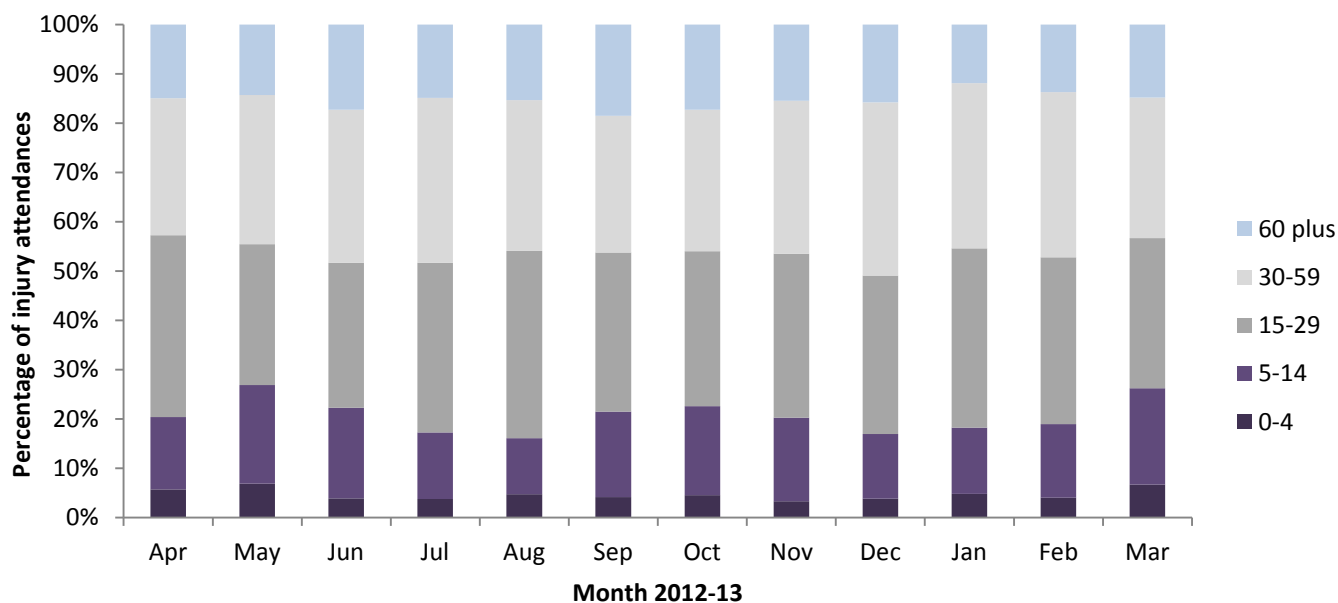


Table 1: ED injury attendances by source of referral and month, April 2012 to March 2013^{*1,2}

Source of referral	Apr	May	Jun	Jul	Aug	Sep	Oct	Nov	Dec	Jan	Feb	Mar	Total	%
Self-referral	428	492	389	410	354	499	462	429	314	242	292	328	4639	92
Emergency services	25	19	30	30	17	25	15	17	21	21	24	21	265	5
GP	12	16	10	***	7	5	7	***	6	***	***	***	76	2
Educational establishment	***	***	***	6	***	***	***	5	***	***	***	***	30	1
Other	5	8	***	***	***	***	***	***	***	***	***	***	18	0
Police	***	***	***	***	***	***	***	***	***	***	***	***	11	0
Total	475	539	435	451	379	530	487	454	342	269	322	358	5041	100

* There was one attendance referred by work and one attendance referred by a healthcare provider; these have been included in the total.

¹ Please note that all numbers less than five have been suppressed (with ***) in line with patient confidentiality and if there is only one number less than five in a category then two numbers will be suppressed to prevent back calculations from totals.

² GP = General Practitioner

Table 2: ED injury attendances by injury group and month, April 2012 to March 2013

Injury group	Apr	May	Jun	Jul	Aug	Sep	Oct	Nov	Dec	Jan	Feb	Mar	Total	%
Other injury	242	346	239	238	199	305	267	242	215	131	147	152	2723	54
Sports injury	142	110	106	94	72	125	119	96	45	41	70	94	1114	22
RTC	48	44	53	49	46	42	43	62	39	37	61	43	567	11
Assault	31	29	22	45	36	29	27	34	27	30	24	30	364	7
DSH	12	10	15	25	26	29	31	20	16	30	20	39	273	5
Total	475	539	435	451	379	530	487	454	342	269	322	358	5041	100

Table 3: ED injury attendances by incident location and month, April 2012 to March 2013³

Location	Apr	May	Jun	Jul	Aug	Sep	Oct	Nov	Dec	Jan	Feb	Mar	Total	%
Public place	191	209	180	202	175	223	197	179	142	105	145	160	2108	42
Home	171	163	138	142	134	181	146	128	96	92	100	96	1587	31
Other	70	74	60	60	53	54	65	56	50	44	26	55	667	13
Educational establishment	13	50	30	<25	***	39	48	51	18	21	29	31	351	7
Workplace	30	43	27	<30	<20	33	31	40	36	7	22	16	328	7
Total	475	539	435	451	379	530	487	454	342	269	322	358	5041	100

Table 4: ED injury attendances by discharge destination and month, April 2012 to March 2013**

Discharge destination	Apr	May	Jun	Jul	Aug	Sep	Oct	Nov	Dec	Jan	Feb	Mar	Total	%
Discharge - follow up care by GP	189	235	155	152	134	202	183	183	137	111	148	164	1993	40
Discharged - no follow-up	90	121	114	117	94	111	109	96	85	27	39	47	1050	21
Fracture clinic	81	79	58	50	41	76	65	61	43	42	54	54	704	14
Admitted	46	48	45	39	42	55	54	44	30	28	33	29	493	10
ED clinic	21	24	24	29	22	33	32	33	16	23	23	20	300	6
Left - before being treated	19	14	16	32	17	23	16	9	8	11	9	18	192	4
Out-patient clinic	20	11	10	11	11	15	14	17	9	18	12	15	163	3
Transferred to other health care provider	***	***	***	7	10	5	5	***	***	***	***	6	52	1
Other health care professional	5	***	***	8	***	***	5	6	6	***	***	***	49	1
Left - refused treatment	***	***	***	***	***	***	***	***	***	***	***	***	21	0
Other	***	***	***	***	***	5	***	***	***	***	***	***	20	0
Total	475	539	435	451	379	530	487	454	342	269	322	358	5041	100

** There were two attendees who died in the department and two attendances where the discharge destination was unknown; these have been included in the total.

Assaults

Table 5: ED assault attendances by age group and month, April 2012 to March 2013[^]

Age group	Apr	May	Jun	Jul	Aug	Sep	Oct	Nov	Dec	Jan	Feb	Mar	Total	%
5-14	***	***	***	***	***	***	***	***	***	***	***	***	26	7
15-29	19	16	13	25	25	15	16	18	14	16	11	16	204	56
30-59	10	9	7	16	10	12	8	13	11	11	10	11	128	35
60 plus	***	***	***	***	***	***	***	***	***	***	***	***	5	1
Total	31	29	22	45	36	29	27	34	27	30	24	30	364	100

[^]There was one attendance in the 0-4 age group; this has been included in the total.

³ Please note that all numbers less than five have been suppressed (with ***) in line with patient confidentiality and if there is only one number less than five in a category then two numbers will be suppressed to prevent back calculations from totals.

Figure 3: Number of ED assault attendances by gender and month, April 2012 to March 2013⁴

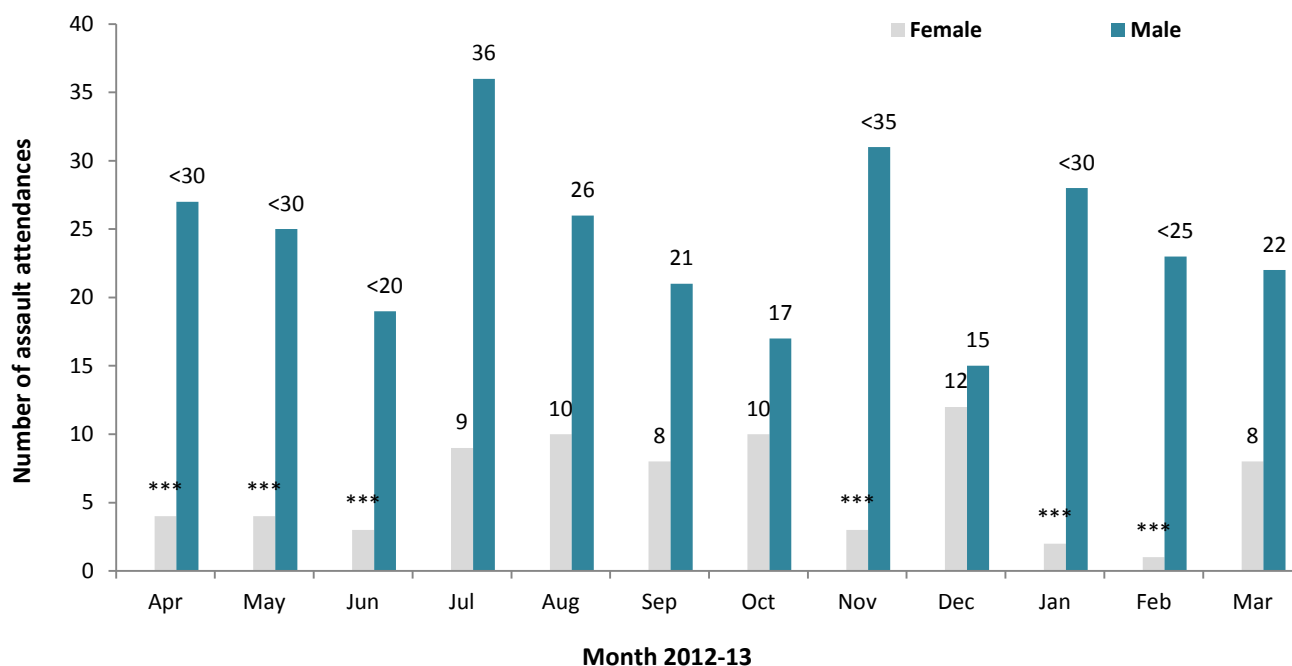


Table 6: ED assault attendances by incident location and month, April 2012 to March 2013

Location	Apr	May	Jun	Jul	Aug	Sep	Oct	Nov	Dec	Jan	Feb	Mar	Total	%
Public place	21	18	11	25	23	17	20	17	18	14	14	14	212	58
Home	7	***	***	12	7	7	***	8	***	5	***	5	65	18
Other	***	***	***	7	6	5	***	***	5	9	***	6	57	16
Educational establishment	***	***	***	***	***	***	***	***	***	***	***	***	20	5
Workplace	***	***	***	***	***	***	***	***	***	***	***	***	10	3
Total	31	29	22	45	36	29	27	34	27	30	24	30	364	100

Table 7: ED assault attendances by discharge destination and month, April 2012 to March 2013

Disposal	Apr	May	Jun	Jul	Aug	Sep	Oct	Nov	Dec	Jan	Feb	Mar	Total	%
Follow-up	12	11	12	26	16	13	11	18	10	11	7	14	161	44
Discharged	12	12	8	9	11	12	13	11	13	12	14	15	142	39
Other	***	***	***	<10	***	***	***	***	***	***	***	***	36	10
Admitted	***	***	***	***	<10	***	***	***	***	***	***	***	25	7
Total	31	29	22	45	36	29	27	34	27	30	24	30	364	100

Published July 2013

Karen Swarbrick (TIIG Researcher/Analyst)

Centre for Public Health, Liverpool John Moores University, 2nd Floor, Henry Cotton Building, Liverpool, L3 2ET

Tel: 0151 231 4498 Email: K.A.Swarbrick@ljmu.ac.uk

Website: www.tiig.info (please note data requests should be made through the website)

⁴ Please note that all numbers less than five have been suppressed (with ***) in line with patient confidentiality and if there is only one number less than five in a category then two numbers will be suppressed to prevent back calculations from totals.